



Wild Poliovirus Outbreak in Kenya Situation Report – 10th June 2014

HIGHLIGHTS

- Total number of confirmed cases of WPV1 for Kenya to date remains at 14. Date of onset of paralysis of the last polio case is 14 July 2013.
- Preparations are in progress towards the 21-25th June nationwide NIDs. County level trainings are being conducted in clusters this week 9-13th June through out the country
- The most recent WPV1 case in the HOA was reported from Jariban district, Mudug province, Somalia, with onset of paralysis on 11 May. The total number of WPV1 cases in the Horn of Africa this year is now two(one was detected in Ethiopia with date of onset 5th January 2014).
- A total of **5589900** children were vaccinated during the 10-14th May sNIDs that targeted 5,405,042 <5years children in 25 high risk counties, achieving a coverage of 103%. Independent Monitoring data shows 95% of the children were vaccinated.

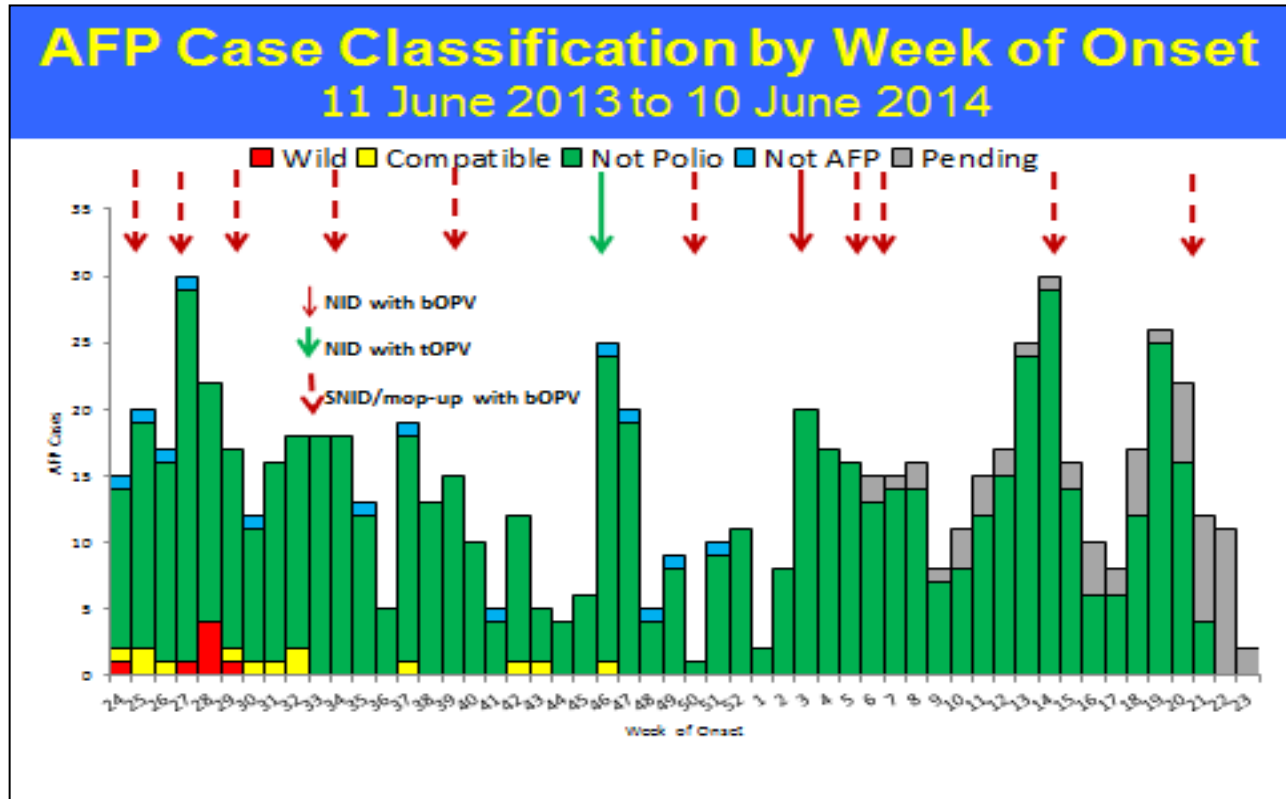
EPIDEMIOLOGICAL UPDATE

- 14 WPV1 cases have so far been confirmed since the onset of the polio outbreak in April 2013. Onset of paralysis for last confirmed WPV1 case is 14 July 2013.

VACCINATION RESPONSE UPDATE

- A nationwide NID is scheduled for 21-25 June NID targeting 8.8 million children <5yrs. Preparations towards the campaign has already commenced. 9.68 million doses of b OPV have arrived the country. National and county level trainings for the SIA are being conducted this week, 9th -13th June alongside training for Rotavaccine introduction scheduled for 1st July 2014. This will be the first nationwide campaign for the country in 2014.
- A total of **5589900** children were vaccinated during the May 10-14th sNIDs campaign achieving an administrative coverage of 103%. Independent monitoring data showed an improvement on the April SIA with an achievement of 95% coverage. A total of 131 subcounties (86%) achieved a coverage of > 90%, 13(9%) achieved between 85-90% coverage while 5% achieved a coverage below 85%. The most common reason for missing a child was due to absence from home(46%). Commonest sources of information for parents and care givers were Radio(21%) and megaphone(16%)

Kenya 2013 Polio Outbreak Epi Curve 11 June 2013 to 10 June 2014



SURVEILLANCE UPDATE

- 339 AFP cases have been reported (263 same period 2013) from 46 (98%) of the 47 counties achieving a National Non polio AFP rate of 4.31 and % stool adequacy of 88%.
- 80% (37) of counties that have reported AFP cases have met the standard nonpolio AFP rate of >2/100,000.
- 76% (35) of counties that have reported cases have met the standard % stool adequacy of >80%
- 43 (15%) districts with target under 15pop of >50000 are yet to report AFP cases

ROUTINE IMMUNIZATION UPDATE

- National level TOT for Rota Vaccine introduction in the country was conducted on 29th May 2014. County level trainings in 5 clusters are currently in progress 9th -13th June alongside NIDs training. The Rota Vaccine is scheduled to be introduced into the National RI schedule on 1st July 2014.

TECHNICAL SUPPORT, SURGE CAPACITY & CROSS BORDER COORDINATION

- 4 Polio consultants and 9 STOP 43 members are currently in the field supporting Surveillance, Routine Immunization and SIA activities
- Synchronized SIAs across 3 HOA countries (Ethiopia, Somalia, Djibouti) will be conducted from 14th -21st June 2014. Unfortunately Kenya will not participate in this synchronization due to logistic issues.

Annexes

Chart 1

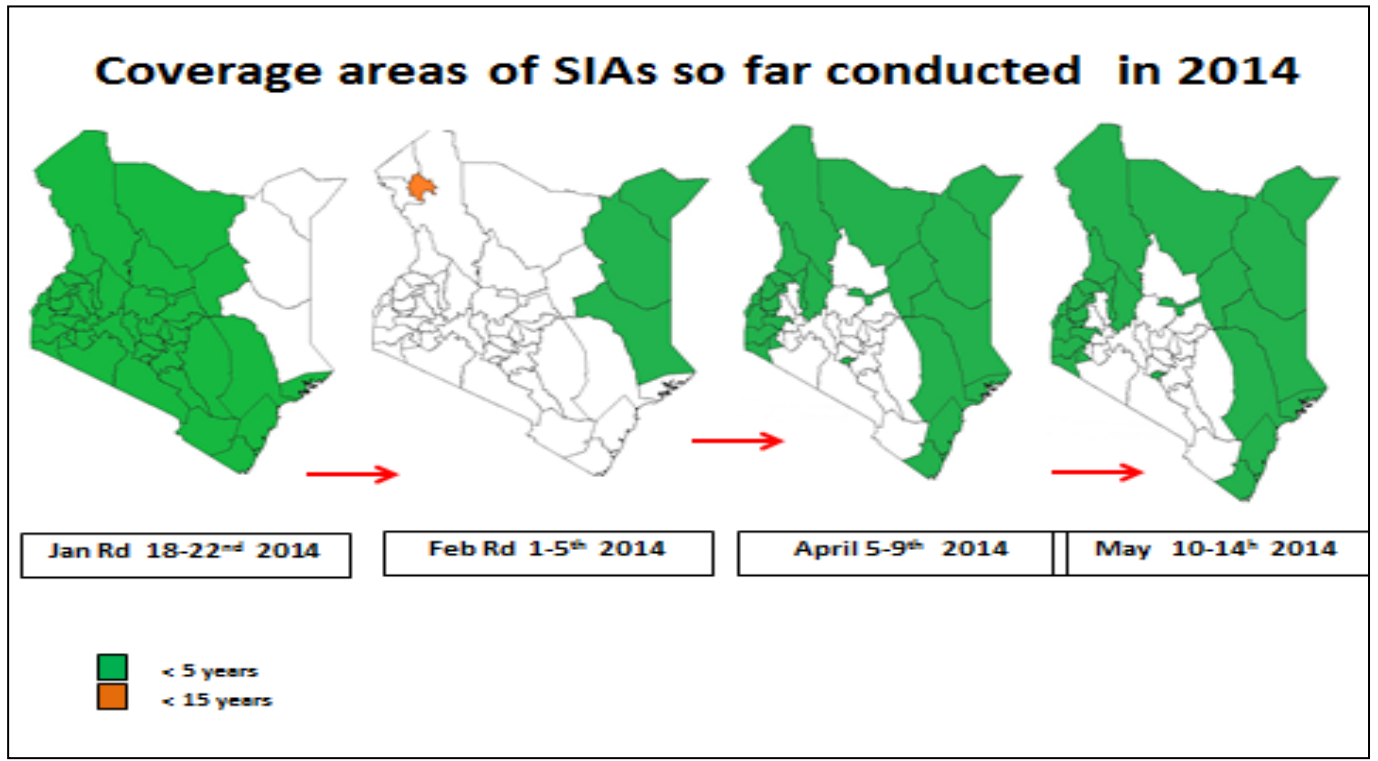


Chart 2

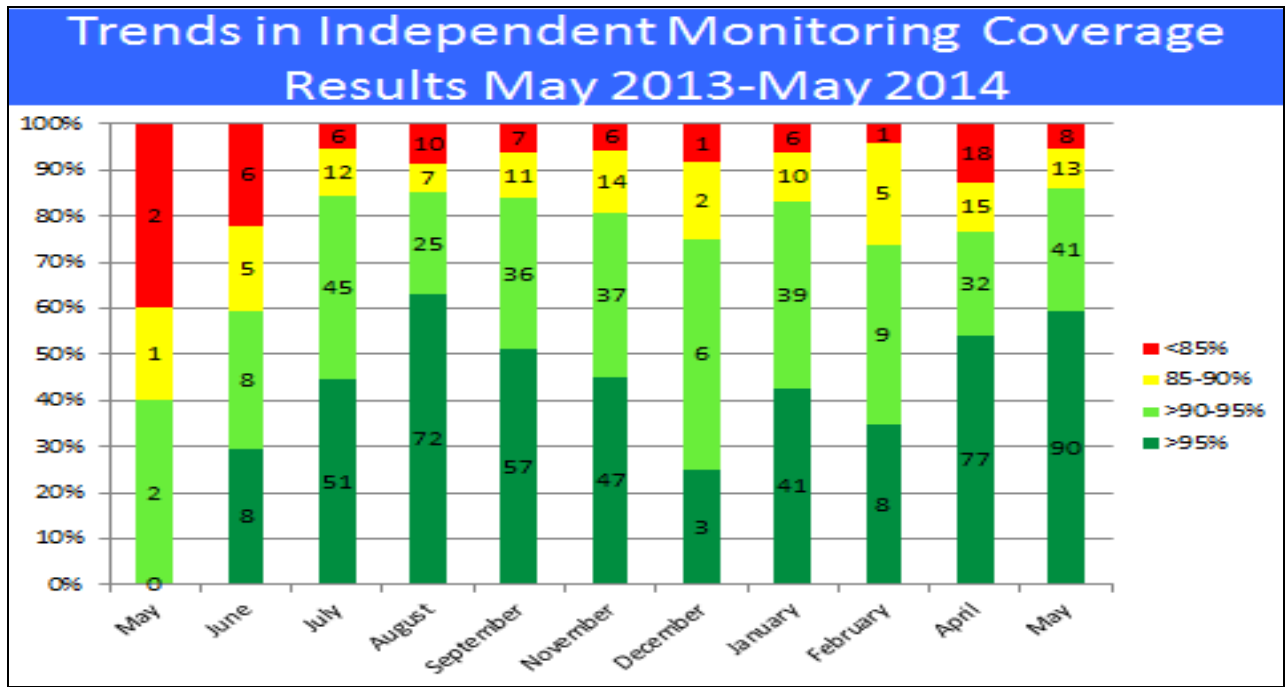


Chart 3

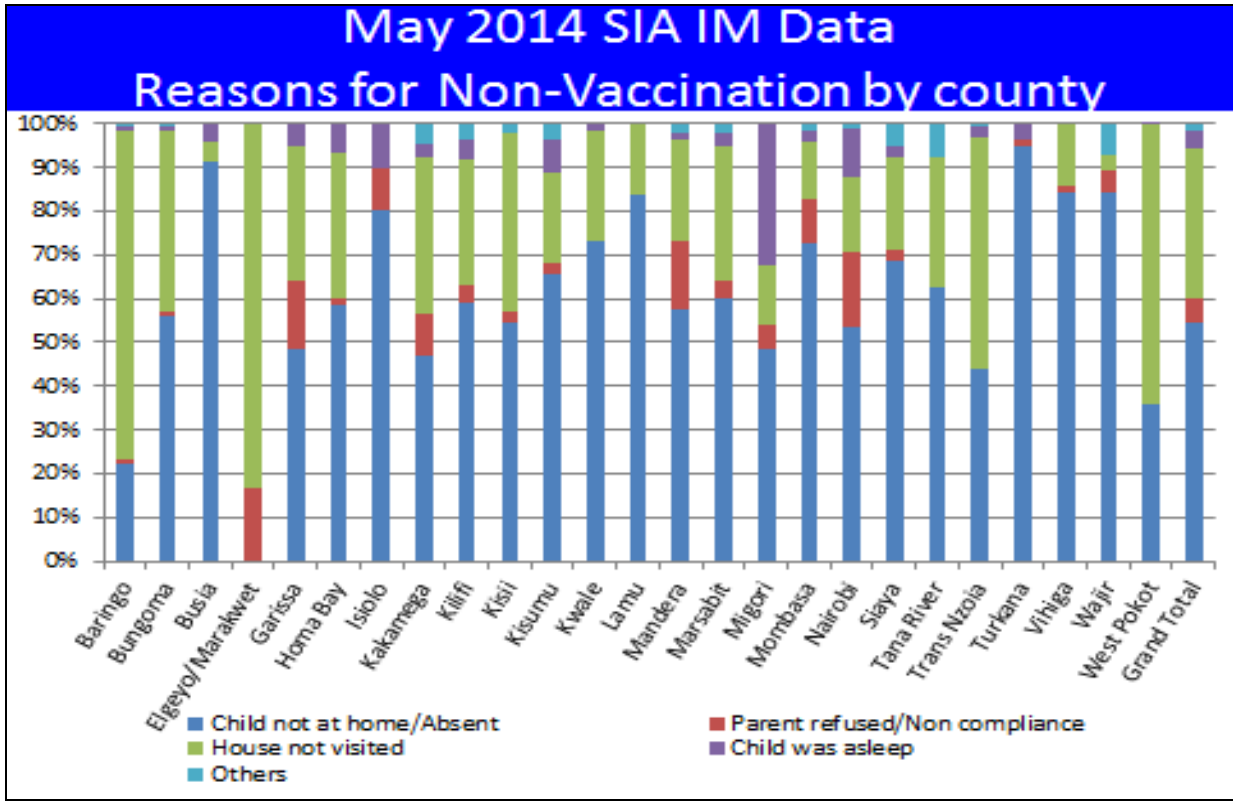


Chart 4

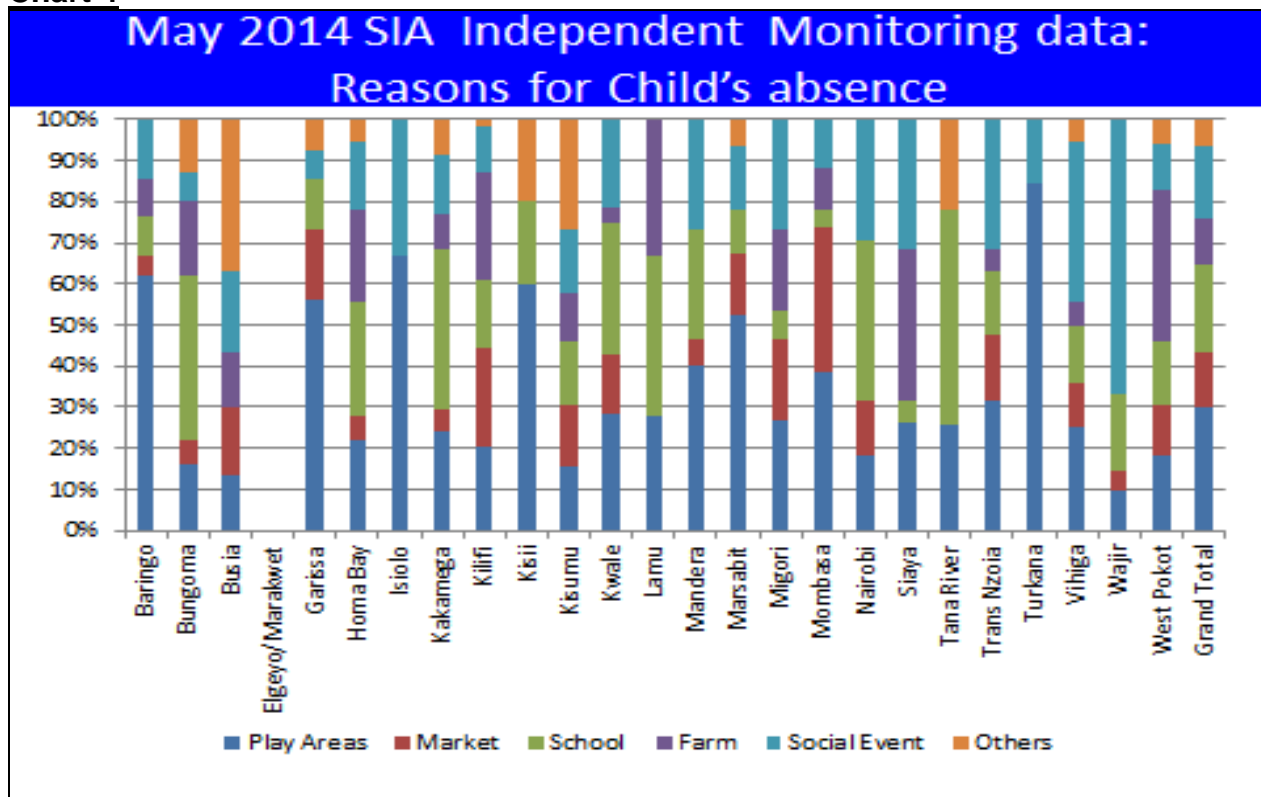


Chart 5

